

# LM4702 Power Amplifier

National Semiconductor  
Application Note 1490  
Mark Brasfield  
May 2006



## Introduction

This application note will present several useful design techniques and practices that will assist the reader in creating a successful audio power amplifier design utilizing the LM4702. Following these steps will result in an amplifier that measures well in the universally accepted key parameters

such as THD+N (0.0006% THD), SNR, Frequency Response, Noise and other audio specifications. In addition, these techniques will also assist the designer in creating an audio amplifier that has performance comparable to other amplifiers which are considered high fidelity.

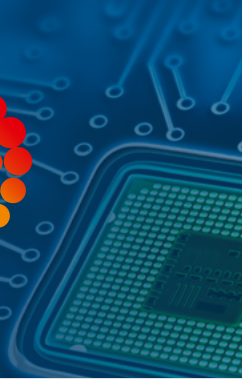


20196206

**FIGURE 1. Complete LM4702 – based 100W/channel High-Fidelity Power Amplifier**



**all-electronics.de**  
ENTWICKLUNG. FERTIGUNG. AUTOMATISIERUNG



Entdecken Sie weitere interessante Artikel und News zum Thema auf all-electronics.de!

**Hier klicken & informieren!**



Schematic Diagram

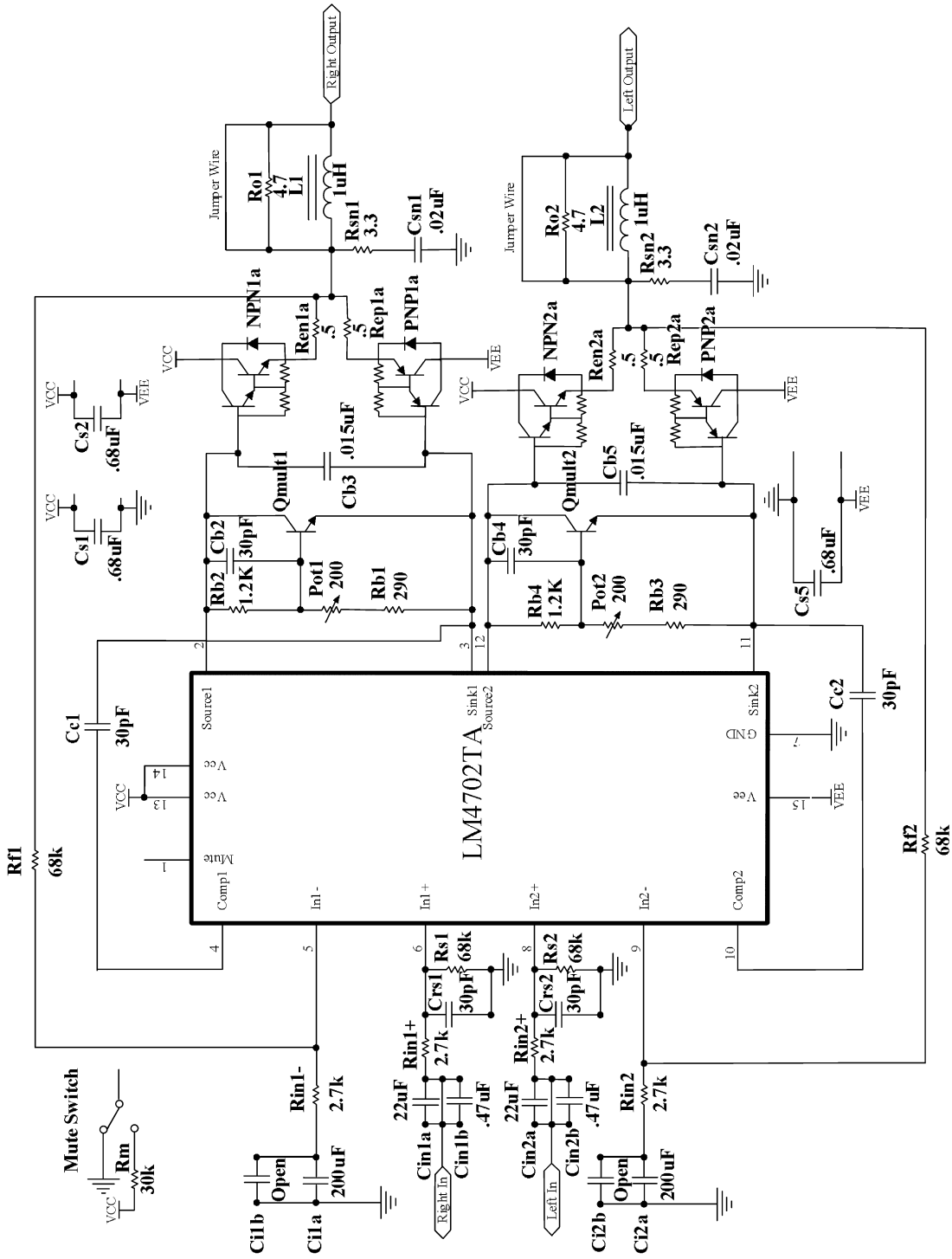


Figure 2. Fully Complementary LM4702 — based High Fidelity Stereo Power Amplifier

## Application Information

### DEMONSTRATION PCB BOARD LAYOUT

As with all low noise, high quality circuit board layouts, the LM4702 power amplifier driver requires careful consideration. A good place to start is with the ground and power circuits design layout.

Star connections for ground and power are always a good practice for audio circuit board layouts. A star connection is where there are individual traces from each component in the circuit that return to a central point. A good example of this can be seen in the artwork for the LM4702 demonstration board shown in Figure 2. Notice how all the ground traces converge at the left side of the board, near Rs1 and Rs2, and connect to the two ground pins in the center of the power connector. The ground traces that connect to the right and left output jacks also converge at the center of the star ground which is the center of the power connector where the two ground pins are located.

The same star configuration for routing ground traces can also be applied to power supply traces. This is not as obvious on the LM4702 demonstration board because the power supply connections for the left and right output stages are completed through separate cables at the top edge of the demonstration board. The power connections for the LM4702 chip come through the connector at the bottom of the board where the center of the star ground also connects. This effectively creates a star power circuit because there are separate wires connected to the main power supply capacitors from each output stage and the LM4702. The primary reason for this star is that the power traces to the Complementary Darlington output devices and the LM4702 must be kept separate. If they are not kept separate, then the high current being drawn by the output stage can affect, or even modulate, the power supply levels for the LM4702 chip. This will increase distortion and will negatively impact the quality of the audio output signal.

Ground planes and power planes must be avoided. A ground plane is a large area of copper commonly used in digital circuit boards. All the ICs connect their ground pins to this

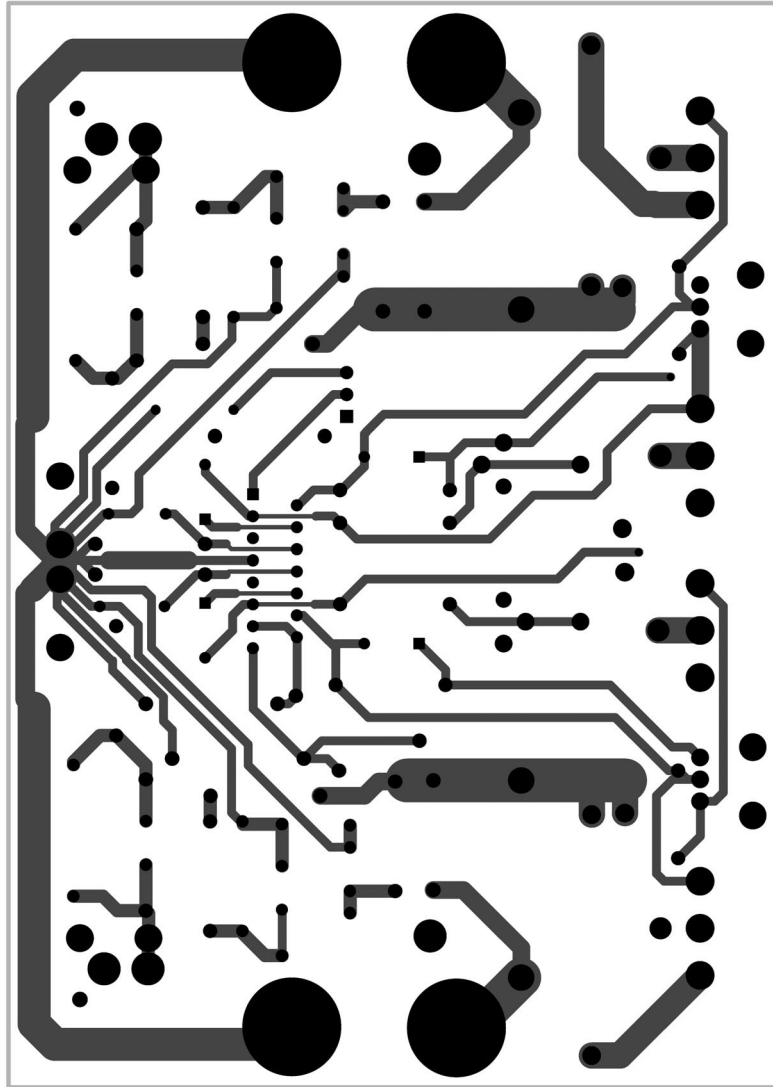
large area of copper and do not use individual traces to connect to a central ground. In a high fidelity amplifier, this will create confusing ground paths (ground loops) that produce adverse effects on the output signal. A very audible hum is one of the most noticeable effects of ground loops caused by ground planes.

Designing a PCB with separate ground traces and power supply traces requires extra layout design time, but the final cost of the board will not change. The cost may actually decrease if the board is kept to a two layers design instead of multi-layer designs, common in digital circuit boards.

Maintaining symmetry in the right and left channel areas of the PCB artwork is important. PCB artwork symmetry means that the left and right sections of the circuit look very similar if not exactly the same with the same trace lengths and widths. In some cases a mirror image of the left to the right sides of the artwork on the circuit board create the proper balanced (identical left and right channel) measurements in the final design. Example: In order to achieve 0.0006% THD+N for the right and left channel circuits, the ground connections on the board had to be identical in length and width to under 0.01" (.25mm) of an inch and had to have identical geometries on both sides of the board. THD+N numbers of 0.01% or better can be achieved without such careful considerations but again the final cost of the circuit board will be the same for a mediocre layout or one which is carefully designed.

A more specific point about the LM4702 demonstration board artwork to notice is on the top layer of the amplifier circuit board where a trace is connected to Sink 1 on pin 3 of the LM4702 that heads off to the output Darlington Transistors and a second trace is connected to Sink 2 on pin 11. Through several iterations of the artwork it was discovered that these two traces require a minimum spacing of 0.1" (2.54mm) to avoid possible oscillations. The reason for this is because this is the most sensitive point for both channels and therefore there should not be any coupling between these two points. Thus the reason for a minimum spacing of 0.1" (2.54mm) between these two traces.

# Application Information (Continued)



20196203

Figure 3. Recommended PCB Layout, Top Layer

Application Information (Continued)

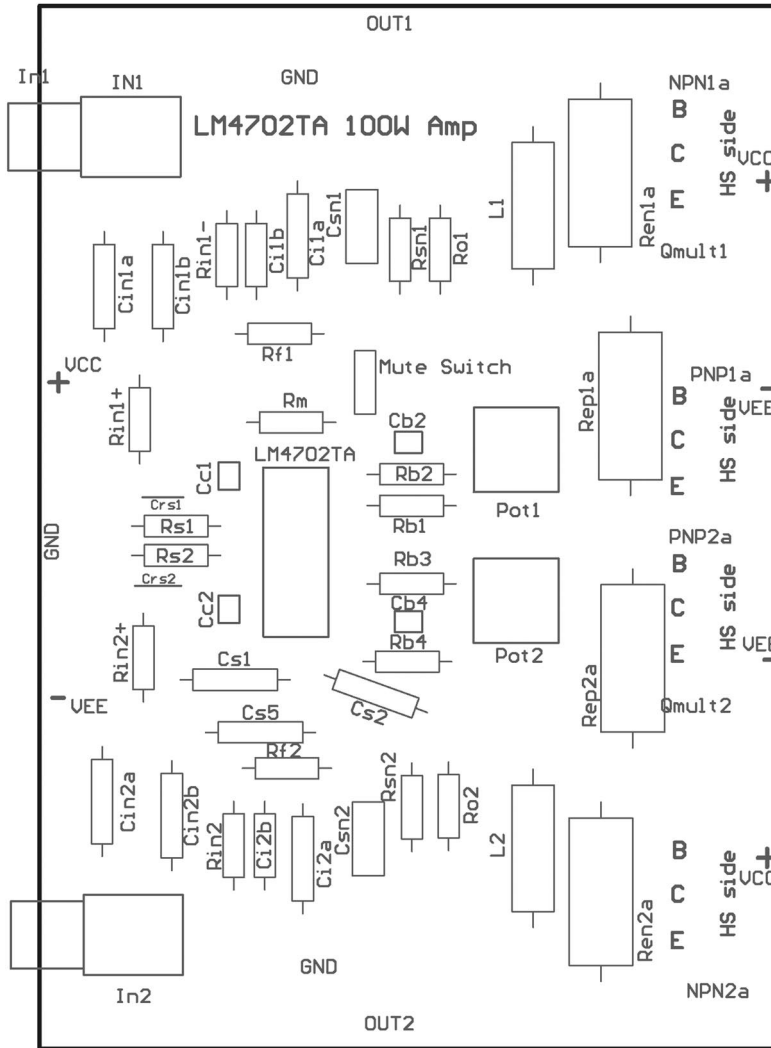
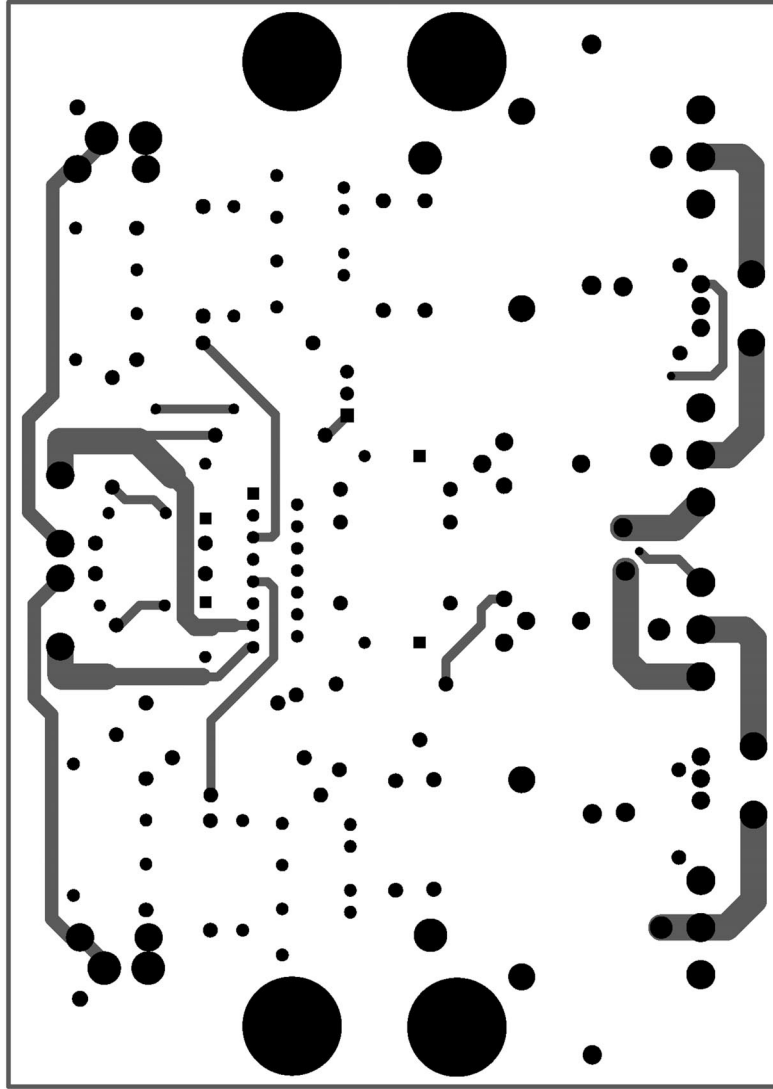


Figure 4. Recommended PCB Layout, Top Silkscreen

20196205

**Application Information** (Continued)



20196204

**Figure 5. Recommended PCB Layout, Bottom Layer**



## Application Information (Continued)

### BIAS

A new National wafer fabrication process is used to create the LM4702 High Voltage Driver. This allows reduced bias levels while maintaining THD+N 0.0006% performance

AN external  $V_{BE}$  multiplier circuit in the LM4702 Demo Amplifier sets the output stage bias. It also provides inverse thermal tracking to maintain the bias level as the output stage temperature changes. See Figure 2. Transistors  $Q_{mult1}$  and  $Q_{mult2}$  (presently a D44C8 or a TIP31A) are physically mounted on the heatsink between the NPN and PNP Darlington output devices, providing the best inverse thermal tracking possible. The ability to set lower bias levels on the LM4702 means less wasted power and less heat.

The LM4702 Demonstration Stereo Power Amplifier achieves THD+N as low as 0.0006% with only 15 to 20mA of bias current. Increasing the bias to drive the class AB Darlington output stage into a more Class A region of operation was tested, but there was no improvement in THD+N or any other audio measurements. There was also no improvement in the critical listening tests performed at National Semiconductor's in-house dedicated sound room.

The LM4702 demonstration amplifier uses  $0.5\Omega$  degeneration resistors in the emitter circuits of the Darlington transistors used in the output stage. A  $0.5\Omega$  assures maximum protection and stability. However,  $0.33\Omega$  or less could be used to slightly increase output power.

### POWER SUPPLY DESIGN AND TRANSFORMER SHIELDING TECHNIQUES

The power supply used in the LM4702 Demonstration Stereo Power Amplifier is a simple unregulated, full-wave bridge-rectified configuration. The transformers were chosen based on size constraints in the enclosure and their ability to provide 100W per channel into an  $8\Omega$  speaker load. Two toroidal transformers rather than one large transformer had to be mounted, one on each side of the enclosure, to get the required VA (Volts X Amp) rating and still fit in the small box. (Please see the BOM on pages 8–9 for part #'s and suppliers). This configuration of one transformer on each side of the enclosure allowed the use of a separate transformer and diode bridge for each of the 50 VDC (positive and negative) supply rails in the amplifier.

Because the enclosure design was small, the close proximity of the two toroidal transformers to the circuit board necessitated shielding both transformers with "Mu-Metal" for best performance. The Mu-Metal mitigates the field interference generated by the transformers to the sensitive circuits on the amplifier printed circuit board. Toroidal transformers already have low radiated fields when compared with iron core transformers, but are more costly. Toroidal transformers are used extensively in high end audio equipment for their low radiated magnetic field characteristic. However, even with the lower level magnetic fields that they radiate, problems can still occur when trying to achieve the lowest possible distortion and noise. Mu-Metal type shielding is only effective when it makes a complete loop around the entire perimeter of the toroidal transformer but it does not need to be grounded to be effective.

### POWER SUPPLY BYPASS CAPACITORS

There are two small  $0.47\mu\text{F}$  film type bypass capacitors on the demo board from each 50VDC power supply to ground. In addition there is a third  $0.47\mu\text{F}$  capacitor across the plus and minus 50VDC rails (from the positive to the negative

rail). This capacitor is placed across the tops of the other two bypass capacitors. There is also a pair of the same capacitors across the two large  $27,000\mu\text{F}$  power supply capacitors. Large electrolytic capacitors can become inductive at higher frequencies and these much smaller film type bypass capacitors will shunt out these undesirable effects. The main power supply filter capacitors were chosen to be the low ESR type which have proved to be best for high-end audio applications in past designs. As is most often the case in audio power amplifier design, their value was chosen based on what was the largest value, lowest ESR capacitor available with a 75 to 80 VDC rating... that would fit in the box!

### OUTPUT OPTIONS

The LM4702 device is limited to 5mA of output drive current capability. The demo amplifier uses a Complementary Darlington output stage to get the current gain required to drive an  $8\Omega$  load to 100W.

Low voltage turn on FET Complementary Output stages can also be used. They must be Low  $V_t$  however because the differential output of the LM4702 is limited to 6VDC.

### SOUND QUALITY

Sound quality can be a very heated and subjective debate. However, some feel that there are differences that can be heard between different pieces of equipment and that almost all of these can be quantified. Of course for any single or double blind test to be valid, output levels of the units under test should be matched as closely as possible. 0.1dB difference in output levels at a single location for a single listener is recommended, but 1dB level matching has proved to be sufficient.

### Parts Selection

In listening tests at National's sound room evaluating different circuit components used in the LM4702 demo amplifier, there was one part whose negative effect on audible signal quality was undeniable. A DC blocking capacitor on the input of the LM4702 degraded sound quality. In multiple listening tests, with different participants and at various locations around the country, the negative effects of even the best film and foil polystyrene DC blocking input capacitors in the audio signal path was confirmed. It is therefore recommended that DC blocking capacitors not be used in the signal path for mid to high-end audio equipment. Where DC offset from another signal source may be a problem then the use of a DC servo circuit that keeps DC offset from appearing at the output of the amplifier is recommended.

A significant amount has been written in the Audiophile Press about how different types of passive components affect perceived sound quality. All of the passive components used in the demo amplifier are standard, commercially available parts. For example RN60 and RN55 metal film resistors were used for all the resistors on the demo board.

### Wiring Techniques

Wiring techniques can have an effect on sound quality. Point to point wiring, star ground and star power routing of supply wires will improve noise measurements and have an effect on perceived "sound quality". Large gauge wire will reduce IR losses (Current X Resistance losses) and thus improve amplifier efficiency slightly. Also good connections are a basic requirement in properly constructed power amplifier.

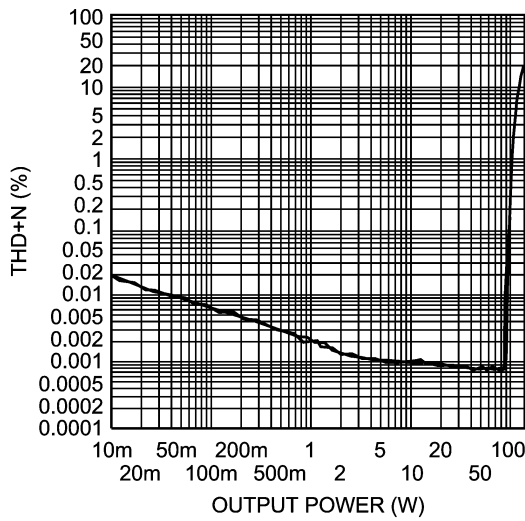


## Conclusion

Every amplifier design creates its own set of unique constraints that will have to be dealt with by the designer but the simplicity of the LM4702 keeps these constraints to a

minimum and it does this at a level of distortion (0.006% THD in a complete amplifier) and audible audio quality that is unmatched!

## THD+N vs Output Power



20196209

**THD+N vs Output Power**  
 $R_L = 8\Omega$ ,  $V_{supply} = \pm 50VDC$

## Bill of Materials

Analog Audio LM4702TA Compact 100W AMP Demo Board

Assembly Part Number: 980012762-100

A3

| Item | Part Number                                       | Part Description                  | Qty | Ref Designator               | Remark                                    |
|------|---|-----------------------------------|-----|------------------------------|---|
| 1    | 551012762-001                                     | LM4702 PCB                        | 1   |                              |   |
| 2    | Res 0.5 Ohm 5W                                    | Resistor                          | 4   | Rep 1a-2a, Ren<br>1a-2a      | Newark 02F1344                            |
| 3    | Res 68K Ohm 1% 0.25W<br>Axial                     | Resistor                          | 4   | Rs1-2, Rf1-2                 | Digikey<br>P68.0KCACT-ND                  |
| 4    | Res 2.7K Ohm 1% 0.25W<br>Axial                    | Resistor                          | 4   | Rin1+, Rin-,<br>Rin2+, Rin2- | Digikey<br>P2.70KCACT-ND                  |
| 5    | Res 249 Ohm 1% 0.25W<br>Axial                     | Resistor                          | 2   | Rb1, Rb3                     | Digikey<br>249XBK-ND                      |
| 6    | Res 1.21K Ohm 1% 0.25W<br>Axial                   | Resistor                          | 2   | Rb2, Rb4                     | Digikey<br>1.21KXBK-ND                    |
| 7    | Res 30.1K Ohm 1% 0.25W<br>Axial                   | Resistor                          | 1   | Rm                           | Digikey<br>30.1KXBK-ND                    |
| 8    | Res 3.3 Ohm 1% 0.25W<br>Axial                     | Resistor                          | 2   | Rsn1, Rsn2                   | Digikey<br>PPC3.3BCT-ND                   |
| 9    | Res 4.7 Ohm 1% 0.25W<br>Axial                     | Resistor                          | 2   | R01, R02                     | Digikey<br>PPC4.7BCT-ND                   |
| 10   | Pot 200 Ohm 1 Turn Top<br>Adjust                  | Resistor                          | 2   | Pot1, Pot2                   | Digikey<br>3345P-201-ND<br>Newark 01F7215 |
| 11   | Cap Polyester Mylar 0.68 $\mu$ F<br>250VDC Radial | Capacitor                         | 3   | Cs1, Cs2, Cs5                | Panasonic<br>ECQ-E2684KF                  |
| 12   | Cap Polyester Mylar 1.0 $\mu$ F<br>100VDC Radial  | Capacitor                         | 2   | See Drawing                  | Panasonic<br>ECQ-E4105KF                  |
| 13   | Cap Mica 30pF 500V Radial                         | Capacitor                         | 4   | Cc 1, Cc2, Cb2,<br>Cb4       | Digikey<br>338-1076-ND                    |
| 14   | Cap Mica 30pF 500V Radial                         | Capacitor                         | 2   | Crs1, Crs2                   | Digikey<br>338-1076-ND                    |
| 15   | Electrolytic Cap 220 $\mu$ F 35V<br>Radial        | Capacitor                         | 2   | Ci1a, Ci2a                   | Panasonic<br>EEU-FC1V221                  |
| 16   | Polypropylene Cap 0.1 $\mu$ F<br>630V Radial      | Capacitor                         | 0   |                              | Panasonic<br>ECQ-P6104JU                  |
| 17   | Polypropylene Cap 0.015 $\mu$ F<br>1250V Radial   | Capacitor                         | 2   | See Drawing                  | Panasonic<br>ECQ-P1H153FZW                |
| 18   | Polyester Cap 0.022 $\mu$ F<br>630VDC Radial      | Capacitor                         | 2   | Csn1, Csn2                   | Panasonic<br>ECQ-E6223KZ                  |
| 19   | Transistor TIP31A                                 | Transistor                        | 2   | See Drawing                  | Fairchild D44C8                           |
| 20   | Transistor MN2488                                 | Darlington                        | 2   | See Drawing                  | Newark 37C2041                            |
| 21   | Transistor MP1620                                 | Darlington                        | 2   | See Drawing                  | Newark 37C2111                            |
| 22   | Connector Vert PCB 3 Pos                          | Connector                         | 2   | See Drawing                  | Molex<br>26-61-4030                       |
| 23   | Binding Post                                      | Connector                         | 4   | See Drawing                  | Digikey<br>111-2223-001                   |
| 24   | Connector Vert PCB 5 Pos                          | Output Connector                  | 4   | See Drawing                  | Molex<br>26-61-4060                       |
| 25   | Connector Vert PCB 6 Pos                          | Power Connector to<br>LM4702 chip | 1   | See Drawing                  | Molex<br>26-61-4060                       |
| 26   | Wire 16 AWG                                       | Jumper                            | 2   | L1, L2                       |   |

## Revision Table

| Rev | Date     | Description          |
|-----|----------|----------------------|
| 1.0 | 05/26/06 | Initial WEB release. |

National does not assume any responsibility for use of any circuitry described, no circuit patent licenses are implied and National reserves the right at any time without notice to change said circuitry and specifications.

For the most current product information visit us at [www.national.com](http://www.national.com).

### LIFE SUPPORT POLICY

NATIONAL'S PRODUCTS ARE NOT AUTHORIZED FOR USE AS CRITICAL COMPONENTS IN LIFE SUPPORT DEVICES OR SYSTEMS WITHOUT THE EXPRESS WRITTEN APPROVAL OF THE PRESIDENT AND GENERAL COUNSEL OF NATIONAL SEMICONDUCTOR CORPORATION. As used herein:

- Life support devices or systems are devices or systems which, (a) are intended for surgical implant into the body, or (b) support or sustain life, and whose failure to perform when properly used in accordance with instructions for use provided in the labeling, can be reasonably expected to result in a significant injury to the user.
- A critical component is any component of a life support device or system whose failure to perform can be reasonably expected to cause the failure of the life support device or system, or to affect its safety or effectiveness.

### BANNED SUBSTANCE COMPLIANCE

National Semiconductor follows the provisions of the Product Stewardship Guide for Customers (CSP-9-111C2) and Banned Substances and Materials of Interest Specification (CSP-9-111S2) for regulatory environmental compliance. Details may be found at: [www.national.com/quality/green](http://www.national.com/quality/green).

Lead free products are RoHS compliant.



**National Semiconductor**  
Americas Customer  
Support Center  
Email: [new.feedback@nsc.com](mailto:new.feedback@nsc.com)  
Tel: 1-800-272-9959

**National Semiconductor**  
Europe Customer Support Center  
Fax: +49 (0) 180-530 85 86  
Email: [europe.support@nsc.com](mailto:europe.support@nsc.com)  
Deutsch Tel: +49 (0) 69 9508 6208  
English Tel: +44 (0) 870 24 0 2171  
Français Tel: +33 (0) 1 41 91 8790

**National Semiconductor**  
Asia Pacific Customer  
Support Center  
Email: [ap.support@nsc.com](mailto:ap.support@nsc.com)

**National Semiconductor**  
Japan Customer Support Center  
Fax: 81-3-5639-7507  
Email: [jpn.feedback@nsc.com](mailto:jpn.feedback@nsc.com)  
Tel: 81-3-5639-7560

[www.national.com](http://www.national.com)